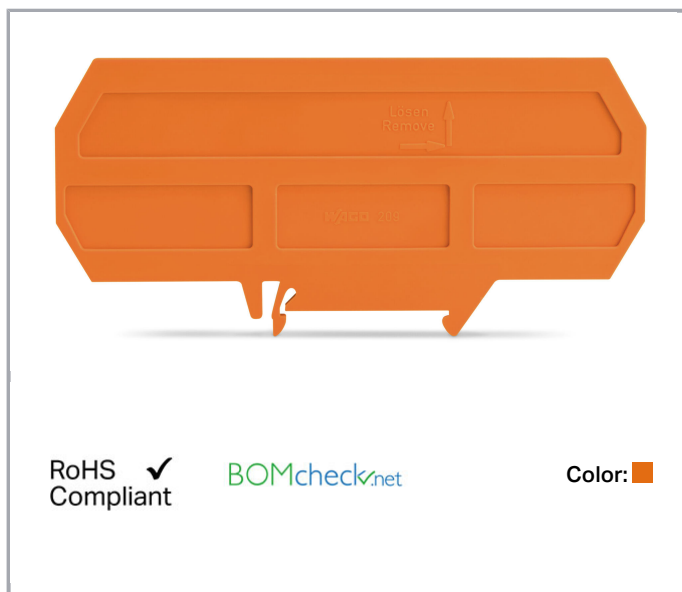


Data sheet | Item number: 209-191

Separator for Ex e/Ex i applications; 3 mm thick; 120 mm wide; orange

www.wago.com/209-191



Data

Geometrical Data

Width	3 mm / 0.118 inch
Height from upper-edge of DIN-35 rail	52 mm / 2.047 inch
Depth	120 mm / 4.724 inch

Material Data

Color	orange
Fire load	0.395 MJ
Weight	14.16 g

Commercial data

Product Group	2 (Terminal Block Accessories)
Packaging type	BOX
Country of origin	DE
GTIN	4017332241328
Customs Tariff No.	85389099990

Downloads

Documentation

Additional Information



Technical explanations

03-abr-2019

pdf
2.1 MB

[Download](#)

CAD/CAE-Data

CAD data

2D/3D Models 209-191

[URL](#)

[Download](#)

CAE data

EPLAN Data Portal 209-191

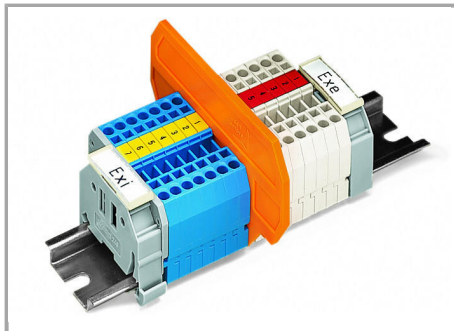
[Download](#)

WSCAD Universe 209-191

[Download](#)

Installation Notes

Ex Application



Separator for Ex e/Ex i applications

According to EN 50020, a minimum distance of 50 mm must be kept between live parts of Ex e and Ex i circuits. The use of Ex e/Ex i separators is a space-saving solution when Ex e and Ex i terminal blocks are mounted on a common carrier rail.

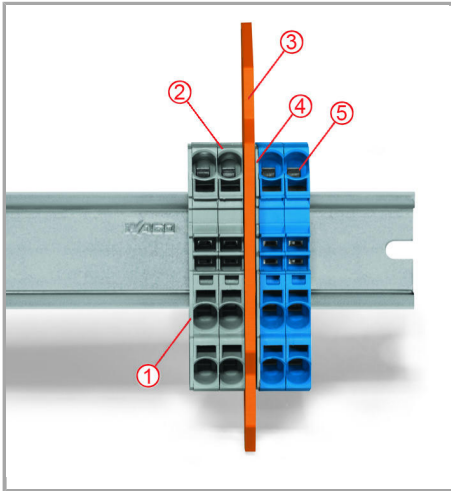
Compatible with 279 to 282 Series:

209-190 for 2-conductor terminal blocks

209-191 for 2-, 3-, 4-conductor terminal blocks

Ex Application

Subject to changes.



Separator located between Ex e II and Ex i terminal strip

End plate

Ex e II terminal blocks

Separator for Ex e/Ex i applications

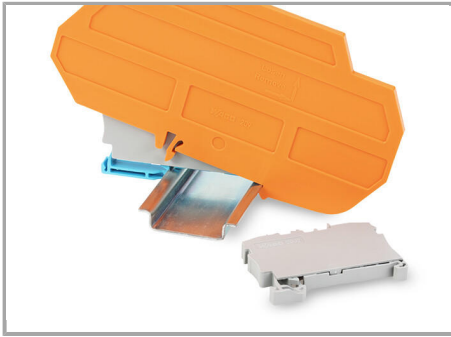
End plate

Ex i terminal blocks

According to EN 50020, a minimum distance of 50 mm must be kept between live parts of Ex e and Ex i circuits. The use of Ex e/Ex i separators is a space-saving solution when Ex e and Ex i terminal blocks are mounted on a common carrier rail.

Safety

Subject to changes.



Ex e II/Ex i terminal strip

Notice:

The movable feet of terminal blocks and separator plates must face the same direction.

Subject to changes.