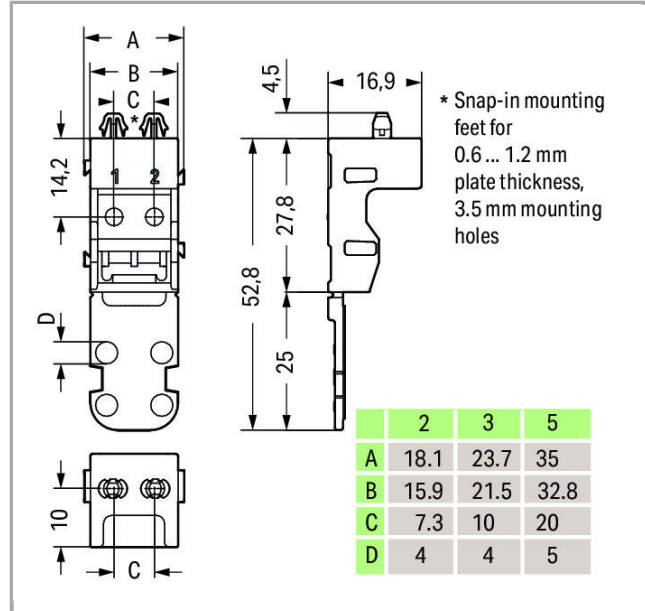
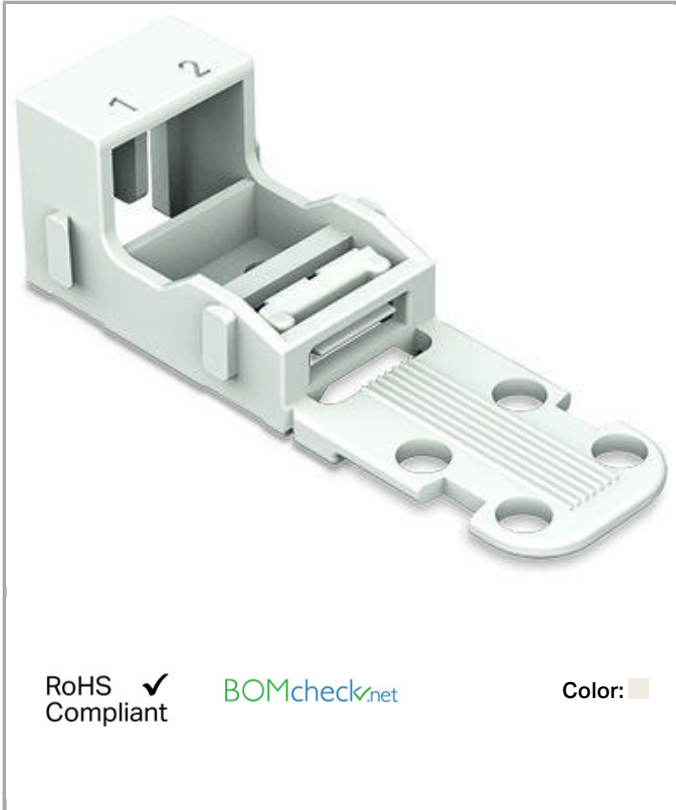


## Data sheet | Item number: 221-522

Mounting carrier; for 2-conductor terminal blocks; 221 Series - 4 mm<sup>2</sup>; with snap-in mounting foot for vertical mounting; white



[www.wago.com/221-522](http://www.wago.com/221-522)



RoHS Compliant

Color:

### Data

#### Geometrical Data

Width	18.1 mm / 0.713 inch
Height	57.3 mm / 2.256 inch
Height from the surface	52.8 mm / 2.079 inch
Depth	16.9 mm / 0.665 inch

#### Material Data

Color	white
Insulating material	Polyamide 66 (PA 66)
Flammability class per UL94	V0
Weight	2.9 g

Subject to changes.

WAGO Kontakttechnik GmbH & Co. KG  
Hansastr. 27  
32423 Minden  
Phone: +49571 887-0 | Fax: +49571 887-169  
Email: [info.de@wago.com](mailto:info.de@wago.com) | Web: [www.wago.com](http://www.wago.com)

Do you have any questions about our products?  
We are always happy to take your call at +49 (571) 887-44222.

## Commercial data

Packaging type	BOX
Country of origin	CN
GTIN	4055143595858
Customs Tariff No.	39269097900

## Downloads

### Documentation

#### Additional Information

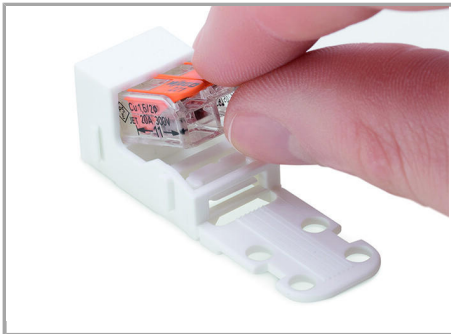
Technical explanations	03-abr-2019	pdf 2.1 MB	Download
------------------------	-------------	---------------	----------

## CAD/CAE-Data

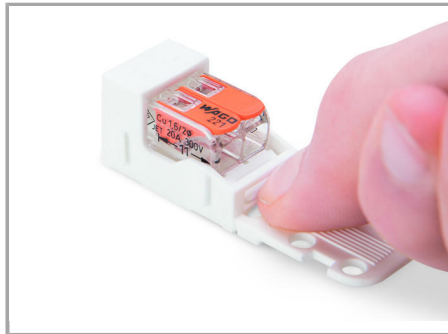
### CAD data

2D/3D Models 221-522	URL	Download
----------------------	-----	----------

## Installation Notes



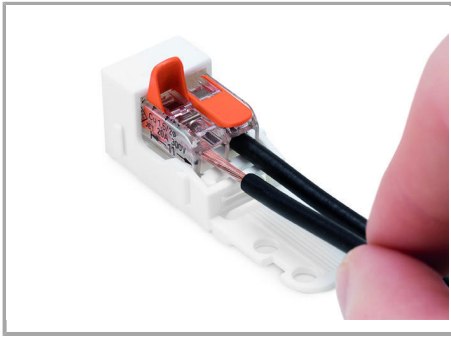
Inserting a connector into the mounting carrier.



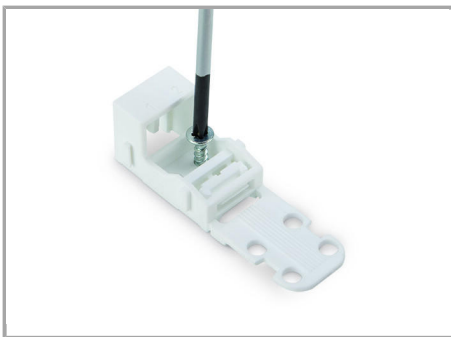
Removing a connector from the mounting carrier.

### Inserting a conductor

Subject to changes.



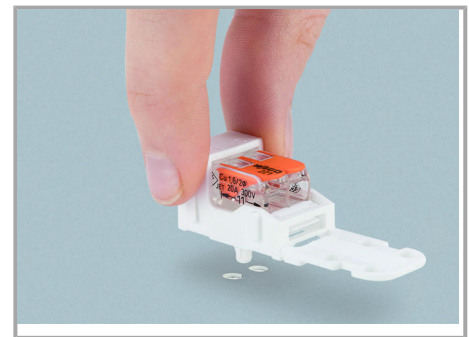
Inserting a conductor.



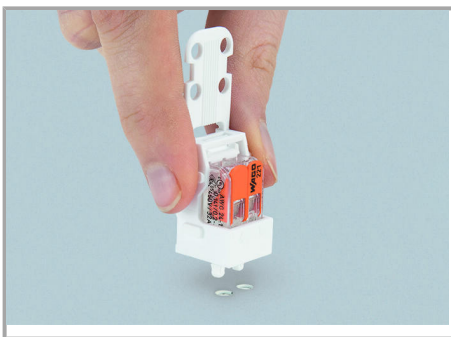
Horizontal screw mounting



Vertical screw mounting



Horizontal mounting via snap-in foot



Vertical mounting via snap-in foot

### Strain Relief

Subject to changes.

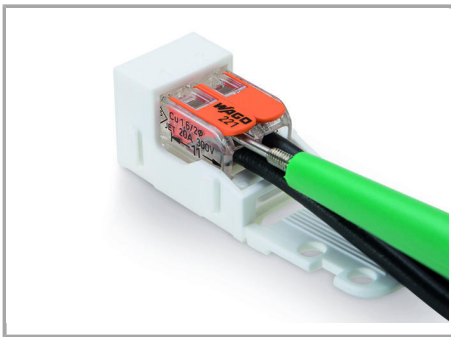


Use a cable tie to secure the conductors to the strain relief plate.



The strain relief plate can be removed.

### Testing



Testing a connector mounted on the carrier via test slot.

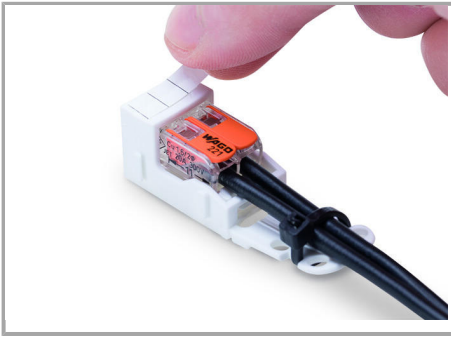
### Application



Connecting a light to the mains.

### Marking

Subject to changes.



Labeling

Subject to changes.