



Product designation				Switch disconnecter
Product type designation				GA
Number of poles	nr.			3
Operating voltage type				AC
Contact characteristics				
Conventional free air thermal current I _{th} IEC/EN	A			63
Rated insulation voltage U _i IEC/EN	V			1000
Rated impulse withstand voltage U _{imp}	kV			8
Operating current I _e				
AC21A		400V	A	63
		500V	A	63
		690V	A	63
AC22A		400V	A	63
		500V	A	63
		690V	A	63
AC23A		400V	A	63
		500V	A	63
		690V	A	47
Power dissipation per pole max	W			1.6
Rated operational power AC23A		400V	kW	30
Rated short time current (1s) I _{cw} (rms)	kA			2500
Conditional short-circuit current (rms)	kA			50
Short-circuit protection with fuse	Class/A			gG63
Making capacity AC23A 400V	A			1250
Breaking capacity AC23A 400V	A			1000
Mechanical life	Cycles			30000
Electrical life AC21A	Cycles			30000
Mechanical features				
Operating position	normal allowable			Vertical plan Any
Fixing				Screw / DIN rail 35mm
Terminals	type			Pillar
	width	mm	12.4	
	height	mm	10.4	
	screw			M8
	tool			Metric Allen key 4
Tightening torque for terminals				

min	Nm	5
max	Nm	6
min	Ibin	3.75
max	Ibin	4.5

Conductor section

Cable min (IEC)	mm ²	4
Cable max (IEC)	mm ²	70
min (AWG/kcmil)		12
max (AWG/kcmil)		1

Ambient conditions

Operating temperature

min	°C	-25
max	°C	55

Storage temperature

min	°C	-40
max	°C	70

Max altitude

m	3000
---	------

Resistance & Protection

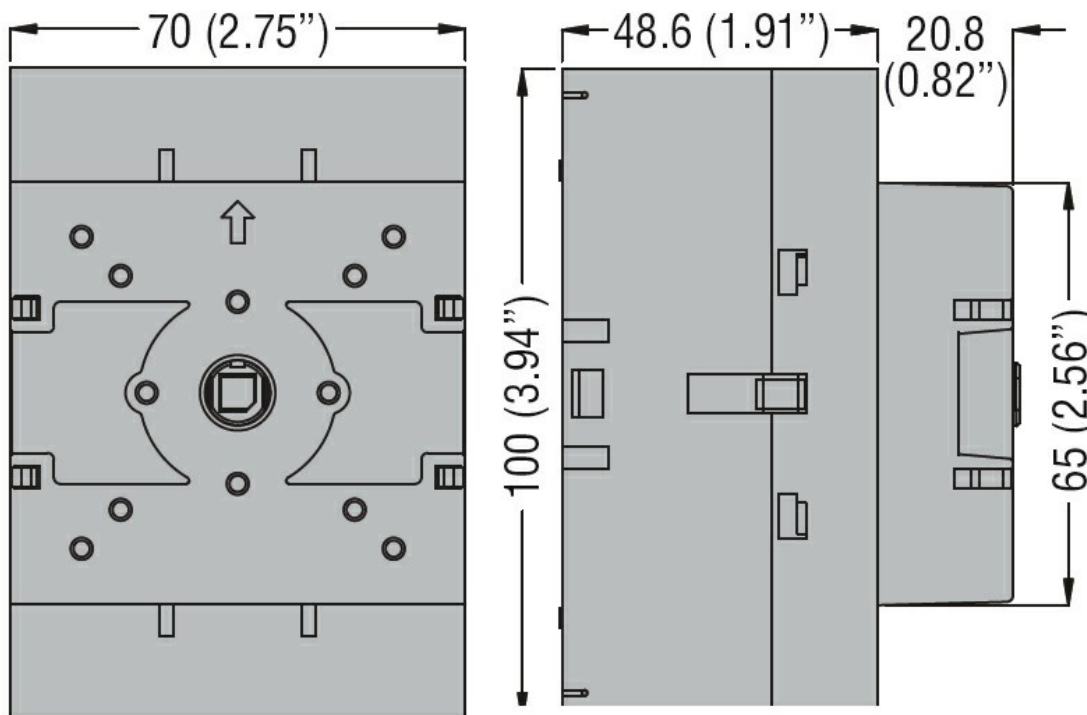
Frontal IP degree

IP20

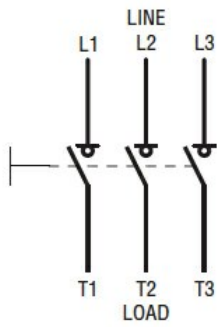
Pollution degree

3

Dimensions



Wiring diagrams



Certifications and compliance

Compliance

CSA C22.2 n°4

IEC/EN 60947-1

IEC/EN 60947-3

UL98

Certifications

CCC

CSA C22.2 n°4

cULus secondo UL98

EAC

ETIM 6 classification

EC000066 - Power contactor, AC switching