

## Han DD Quick-Lock module, female

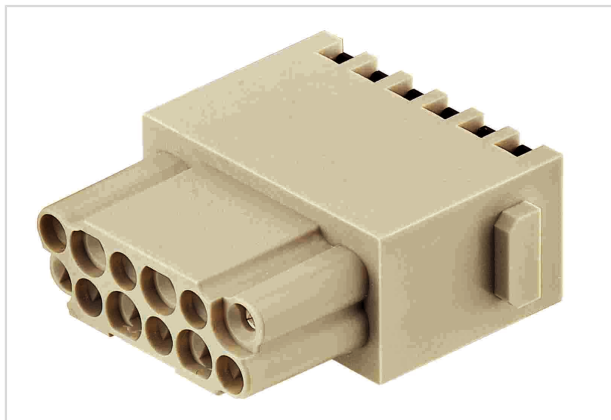


Image is for illustration purposes only. Please refer to product description.

Part number	09 14 012 2732
Specification	Han DD Quick-Lock module, female
HARTING eCatalogue	<a href="https://b2b.harting.com/09140122732">https://b2b.harting.com/09140122732</a>

### Identification

Category	Modules
Series	Han-Modular®
Type of module	Han DD® module

### Version

Termination method	Han-Quick Lock® termination
Gender	Female
Number of contacts	12
Details	Black slide

### Technical characteristics

Conductor cross-section	0.25 ... 1.5 mm <sup>2</sup>
Rated current	10 A
Rated voltage	250 V
Rated impulse voltage	4 kV
Pollution degree	3
Rated voltage acc. to UL	600 V
Insulation resistance	>10 <sup>10</sup> Ω
Contact resistance	≤3 mΩ
Stripping length	10 mm
Limiting temperature	-40 ... +125 °C



Pushing Performance

## Technical characteristics

Mating cycles	≥500
---------------	------

## Material properties

Material (insert)	Polycarbonate (PC)
Colour (insert)	RAL 7032 (pebble grey)
Material (contacts)	Copper alloy
Surface (contacts)	Silver plated
Material flammability class acc. to UL 94	V-0
RoHS	compliant with exemption
RoHS exemptions	6(c): Copper alloy containing up to 4 % lead by weight
ELV status	compliant with exemption
China RoHS	50
REACH Annex XVII substances	No
REACH ANNEX XIV substances	No
REACH SVHC substances	Yes
REACH SVHC substances	Lead

## Specifications and approvals

Specifications	EN 60664-1 IEC 61984
Approvals	DNV GL
UL / CSA	UL 1977 ECBT2.E235076 CSA-C22.2 No. 182.3 ECBT8.E235076

## Commercial data

Packaging size	2
Net weight	23.85 g
Country of origin	Romania
European customs tariff number	85366990
eCl@ss	27440217 Module for industrial connectors (power/signals)