

Inovance Technology - Corporate Overview

Your partner for industrial automation solutions



INOVANCE

About Inovance

The Inovance Group is a leading provider of industrial automation solutions. The company was founded in 2003 in Shenzhen, China.

Inovance's flexible production techniques and expert understanding of all industry sectors – from elevators to plastics to electric vehicles to robotics – have allowed it to establish globally leading industry-specific business units. For example, Inovance's elevator and escalator business unit – Monarch – is one of the world's largest suppliers of elevator and escalator control solutions.

Inovance forms long-term partnerships with its customers. To achieve this, the group offers more than just products: working with Inovance gives customers access to world-class manufacturing and R&D facilities, as well as highly skilled engineering and industry-sector specialists.

Inovance is regularly featured in the global business press and has been repeatedly recognised by Forbes as a high-potential business. In 2019, Inovance was one of 23 companies to be selected for the Best Managed Companies (China) award from Deloitte.

The company is listed on the Shenzhen stock exchange (stock name: INOVANCE; stock code: 300124).

About Inovance's International Export Business

In 2012, Inovance established Inova Automation – its international export arm – and embarked on a rapid program of global expansion. Inovance's export operation is based in Hong Kong, and it has established multiple offices in India, as well as in South Korea and across Europe.

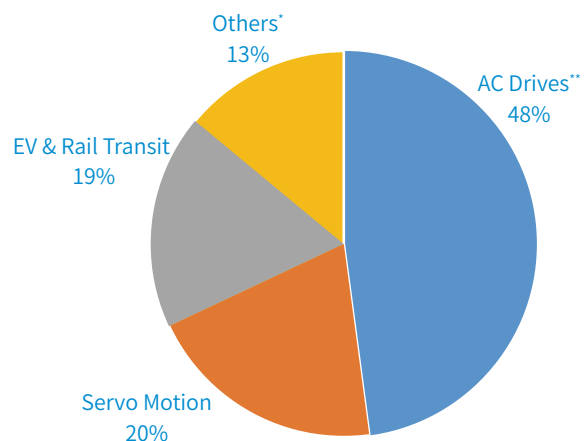
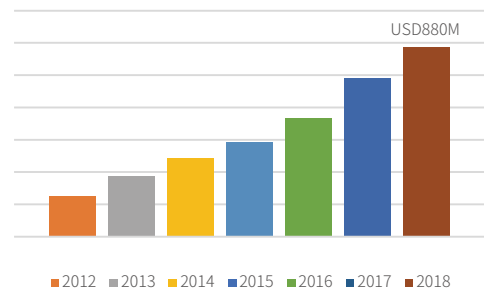
About Inovance Technology Europe

Inovance Technology Europe is the European division of Inovance. With its network of offices and R&D facilities in Germany, France, Italy and Turkey, Inovance Technology Europe is able to offer rapid delivery and local service and support across the continent. Inovance has invested heavily in European R&D capacity, and has based its large local engineering research team in Germany, with a secondary research team located in Italy. The company's European R&D teams develop fully compliant European products designed for the local market, and are currently working on a variety of CNC real-time machine control products. Inovance's European development efforts are rapidly expanding to encompass high-end motion control, servos and drives.

Forward, Always Progressing

In 2018 Inovance achieved sales of \$880M, and year-on-year growth of 24%. The company offers a wide range of products into the industrial automation, industrial robotics, electric vehicle and rail transit sectors. Since its foundation in 2003, Inovance has delivered several million variable speed drives to a wide range of industries.

Sales: 2012-2018



* Includes robotics, vision, IoT, PLC & HMI, sensor & textile products

** Includes elevator drives

Inovance maintains highly skilled engineering teams with deep industry-specific knowledge. The company delivers complete solutions for the following sectors:

- Elevators & Escalators
- Plastic Injection Machinery
- Textile Machinery
- Air Compressors
- Cranes & Hoists
- Printing & Packaging
- Robotics
- Electric Vehicles
- Light Rail Transit

Driven by Technology



AC Drives



MV Drives



AC MultiDrives

EtherCAT



Multi-Axes Servos



Single-Axis Servos



Motion
Controllers



Electric Vehicle Inverters



PLCs & HMIs



CNC Machine Tool Solutions



Robotic Solutions

Market-Focused R&D

Inovance's R&D teams work closely with customers, and are always challenged to deliver on the latest market requirements

In 2018, Inovance invested 12% of revenues in R&D, and it currently employs 1,900 engineers focused on three areas: core technologies, product development and industrial applications. The group uses a uniquely rigorous engineering process that incorporates advanced design modelling, performance analysis and quality assurance techniques. Inovance's research engineers are constantly communicating with customers and are always challenged to meet the latest needs of the market in terms of new technologies, lower costs, higher performance and new form factors. R&D teams carry out significant integrity testing of all technologies, and the company maintains a world-leading array of in-house testing facilities. These include XYZ vibration test rigs, walk in climate chambers and a highly accelerated life test (HALT) chamber. Inovance also maintains research, EMC and LVD test labs which are certified and accredited by TÜV Rheinland and TÜV Süd according to ISO/IEC 17025 and ISO 9001.

Global R&D Network

Inovance has invested heavily in a worldwide R&D network and maintains extensive research facilities around the world, including in China, Germany, Italy and India. The company's global R&D teams use the latest communications and software technologies to work together seamlessly on engineering projects. This ensures that the best technology knowledge and solutions can be gathered from all around the business; and that they are always implemented and adapted in a way that meets the needs of local markets.



Semi-anechoic Chamber



EMC Surge Testing



Conducted Emissions Testing



Highly Accelerated Life Testing



Climate Chamber



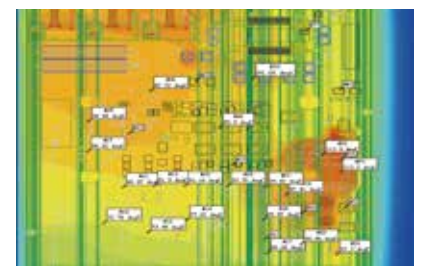
Vibration & Shock Testing



Motion Servo Testing



High Speed Dyno



Thermal simulation

International Certifications

Inovance's products comply with all major international safety certifications and standards, such as CE and UL. The company works with UL listed test labs and various elevator safety bodies for Type Test certifications, and also participates in UL's Client Test Data Program (CTDP). Meanwhile, Inovance's R&D teams work with all leading international testing bodies such as TÜV SÜD and TÜV Rheinland for functional safety. The company is accredited under the Customer Testing Facility (CTF) program run by TÜV Rheinland, as well as the Acceptance of Client Testing (ACT) program run by TÜV Süd. Additionally, Inovance Automotive has received ISO 26262 Functional Safety Management certification from TÜV Rheinland.

ISO 9001
ISO 14001

OHSAS 18001



World-Class Manufacturing

Inovance's advanced global manufacturing facility is ISO 9001 certified and follows continuous improvement principles to achieve world-class standards. The facility is highly automated and makes use of the latest industrial robots and cobots. Regular automation assessments and upgrades ensure that the most efficient manufacturing processes are always in place. Additionally, rigorous inspection techniques such as solder paste inspection, automated optical inspection, furnace temperature inspection, in-circuit testing and functional testing of the finished assembly ensure world-class quality. Meanwhile, statistical process control is used to monitor process consistency.

Advanced Supply Chain Management

Inovance has implemented rigorous supply chain management practices, enabling the company to monitor all raw materials, work-in-progress and finished products along every step of the chain – from supplier to end user. This enables flexible and reliable manufacturing, ensuring that the needs of the customer are met on time, every time.



Suzhou HQ



Robotic Assembly Cell



Automated Optical Inspection



PCB Conformal Coating



Assembly



Heat Soak Testing



Cabinet Assembly



Inovance's World-Leading Suzhou Manufacturing Facility

Monarch BST

An Inovance Company

We Pioneered NICE Integrated Solutions for Elevators

>2,000,000 Installations Worldwide



INOVANCE

Forward, Always Progressing

International Offices

 **Hong Kong SAR (export office)**

Tel: +852 2751 6080
info@inova-automation.com

 **South Korea-Seoul**

Tel: +82 (0) 10 7428 5732
info@inova-automation.com

 **India**

Head Office Chennai
Tel: +91 (0) 44 4380 0201
Ahmedabad
Tel: +91 (0) 79 4003 4274
Mumbai Tel: +91 (0) 22 4971 5883
Delhi Tel: +91 (0) 11 4165 4524
Sales Network in Kolkata, Bengaluru,
Coimbatore, Hyderabad, Pune
info.inovaindia@inova-automation.com

 **Germany-Stuttgart**

Tel: +49 (0) 7144 8990
sales@powerautomation.com
www.powerautomation.com

 **Italy-Milano**

Tel: +39 (0) 2268 22318
info@inova-automation.it

 **France-Bordeaux**

Tel: +33 (0) 5594 01050
pa.france@powerautomation.com

 **Turkey-Istanbul**

Tel: +90 (0) 21 6706 1789
info.turkey@inova-automation.com

Inovance Technology Companies

Shenzhen Inovance Technology Co. Ltd.
Suzhou Inovance Technology Co. Ltd.
Suzhou Monarch Control Technology Co. Ltd.
Shanghai BST Electric Co. Ltd.



Inovance Technology
www.inovance.com