



## BNS 260-02Z-ST-L

- Connector M8 x 1, 4-pole
- Thermoplastic enclosure
- Small body
- Concealed mounting possible
- 26 mm x 36 mm x 13 mm
- Long life
- no mechanical wear
- Insensitive to transverse misalignment
- Insensitive to soiling

## Data

### Ordering data

Product type description	BNS 260-02Z-ST-L
Article number (order number)	101184377
EAN (European Article Number)	4030661321752
eCl@ss number, Version 9.0	27-27-24-02
eCl@ss number, Version 11.0	27-27-24-02
ETIM number, version 6.0	EC002544
ETIM number, version 7.0	EC002544

### Approval - Standards

Certificates	TÜV BG cULus EAC
--------------	---------------------------

### General data

Standards	IEC 60947-5-3 BG-GS-ET-14
Coding level according to ISO 14119	Low
Active principle	Magnetic drive
Installation conditions (mechanical)	quasi-flush
Enclosure material	Glass-fibre, reinforced thermoplastic
Gross weight	31.7 g

### General data - Features

Number of openers	2
Number of safety contacts	2

### Safety appraisal

Standards	EN ISO 13849-1
Mission Time	20 Year(s)

### Safety appraisal - Safety outputs

B10d Normally-closed contact (NC)	25,000,000 Operations
-----------------------------------	-----------------------

### Mechanical data

Actuating element	Magnet
Door hinge	Left
Direction of motion	Head-on to the active surface

### Mechanical data - Switching distances according IEC 60947-5-3

Notice (Switch distance $S_n$ )	Axial misalignment, a horizontal and vertical misalignment of the safety sensor and the actuator are tolerated. The possible misalignment depends on the distance of the active surfaces of the sensor and the actuator. The sensor remains active within the tolerance range.
Ensured switch distance "ON" $S_{ao}$	5 mm

Ensured switch distance      15 mm  
"OFF"  $S_{ar}$

### Mechanical data - Connection technique

Terminal Connector      Connector M8

### Mechanical data - Dimensions

Length of sensor      13 mm

Width of sensor      26 mm

Height of sensor      36 mm

### Ambient conditions

Degree of protection      IP67

Ambient temperature,  
minimum      -25 °C

Ambient temperature,  
maximum      +70 °C

Storage and transport  
temperature, minimum      -25 °C

Storage and transport  
temperature, maximum      +70 °C

Resistance to vibrations to  
EN 60068-2-6      10 ... 55 Hz, amplitude 1 mm

Resistance to shock      30 g / 11 ms

### Electrical data

Voltage type      DC (direct current)

Switching voltage, maximum      75 VDC

Switching current, maximum      0.4 A

Switching capacity,  
maximum      10 VA

Switching frequency,  
maximum      5 Hz

## Scope of delivery

Included in delivery                      Actuators must be ordered separately.

## Accessory

Recommendation (actuator)	BPS 260
Recommended safety switchgear	SRB-E-301ST SRB-E-201LC

## Notes

Note (General)                              The number in brackets indicate the PIN number of the connector.

## Circuit example

Note (Wiring diagram)                      The contacts S11-S12 and S21-S22 must be integrated in the safety circuit.

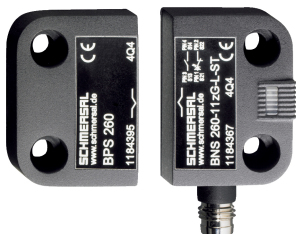
## Ordering code

Product type description:  
BNS 260-(1)(2)Z(3)-(4)-(5)

(1)	
<b>11</b>	1 NO contacts/1 NC contact
<b>02</b>	2 NC contact
(2)	
<b>without</b>	with diagnostic output
<b>/01</b>	1 NC contact
(3)	
<b>without</b>	without LED switching conditions display
<b>G</b>	with LED switching conditions display
(4)	
<b>without</b>	Pre-wired cable
<b>ST</b>	with connector
(5)	
<b>L</b>	Door hinge on left-hand side
<b>R</b>	Door hinge on right-hand side

## Pictures

### Product picture (catalogue individual photo)



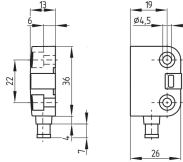
ID: kbns2f04  
| 540.4 kB | .jpg | 352.778 x 287.161 mm - 1000 x 814 px - 72 dpi  
| 42.3 kB | .png | 74.083 x 60.325 mm - 210 x 171 px - 72 dpi

### Product picture (catalogue individual photo)



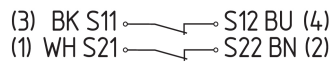
ID: kbns2f05  
| 533.2 kB | .jpg | 352.778 x 287.161 mm - 1000 x 814 px - 72 dpi  
| 42.7 kB | .png | 74.083 x 60.325 mm - 210 x 171 px - 72 dpi

## Dimensional drawing basic component



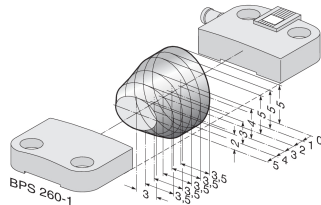
ID: 1bns2g06  
| 25.6 kB | .cdr |  
| 3.1 kB | .png | 74.083 x 51.506 mm - 210 x 146 px - 72 dpi  
| 65.1 kB | .jpg | 352.778 x 245.181 mm - 1000 x 695 px - 72 dpi

## Diagram



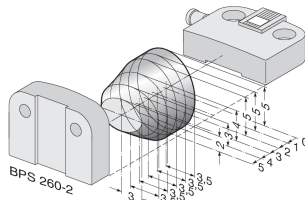
ID: kbns2k25  
| 56.8 kB | .jpg | 352.778 x 70.203 mm - 1000 x 199 px - 72 dpi

## Characteristic curve



ID: kbns2d02  
| 19.2 kB | .png | 74.083 x 49.389 mm - 210 x 140 px - 72 dpi  
| 200.9 kB | .jpg | 352.778 x 235.303 mm - 1000 x 667 px - 72 dpi

## Characteristic curve



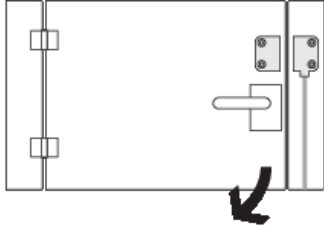
ID: kbns2d03  
| 18.5 kB | .png | 74.083 x 49.036 mm - 210 x 139 px - 72 dpi  
| 200.1 kB | .jpg | 352.778 x 233.892 mm - 1000 x 663 px - 72 dpi

## Contact arrangement



ID: km8--k4b  
| 17.0 kB | .cdr |

## Clipart



ID: kbns2c02  
| 19.6 kB | .cdr |  
| 1.8 kB | .png | 74.083 x 52.211 mm - 210 x 148 px - 72 dpi

Schmersal Ltd., Sparrowhawk Close, WR14 1GL Malvern

The details and data referred to have been carefully checked. Images may diverge from original. Further technical data can be found in the manual. Technical amendments and errors possible.

Generated on: 08/09/2021, 09:34