



**POSITIONING AT THE HIGHEST LEVEL**

**ELECTRONIC CAM SWITCH  
CONTROLLER PAX**



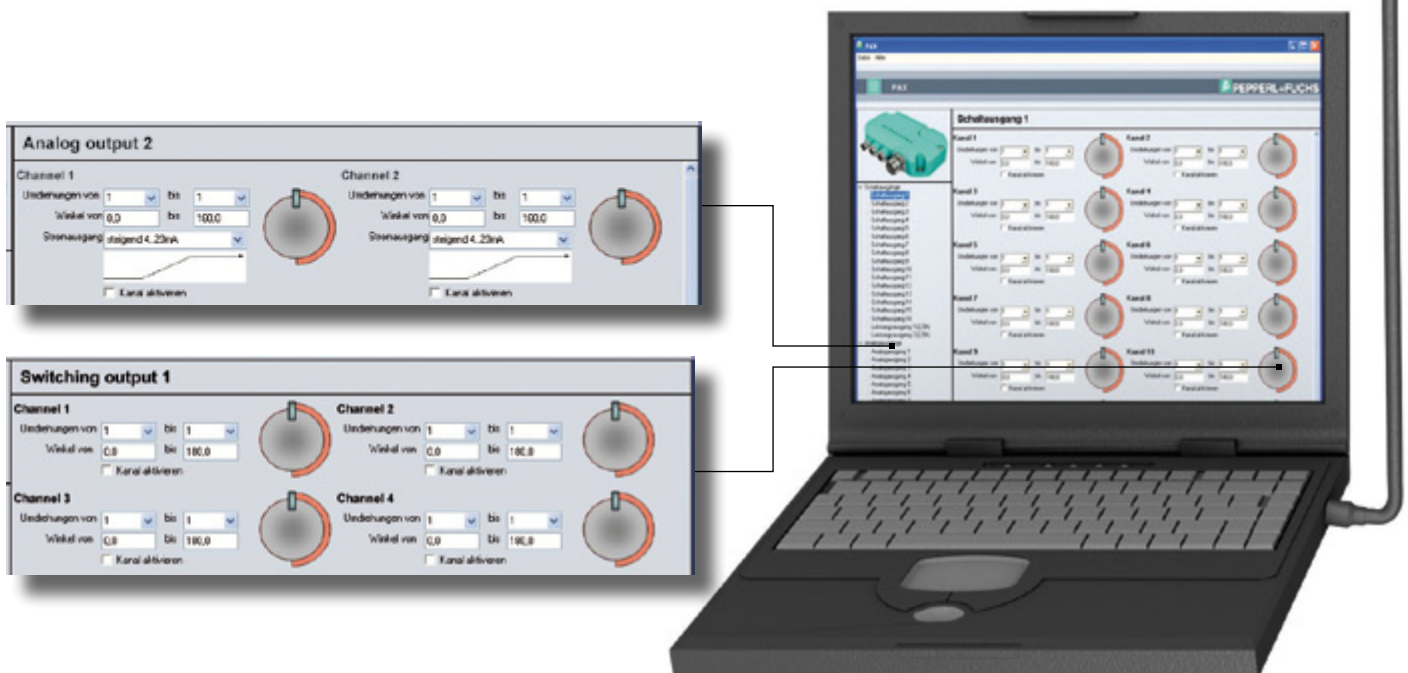
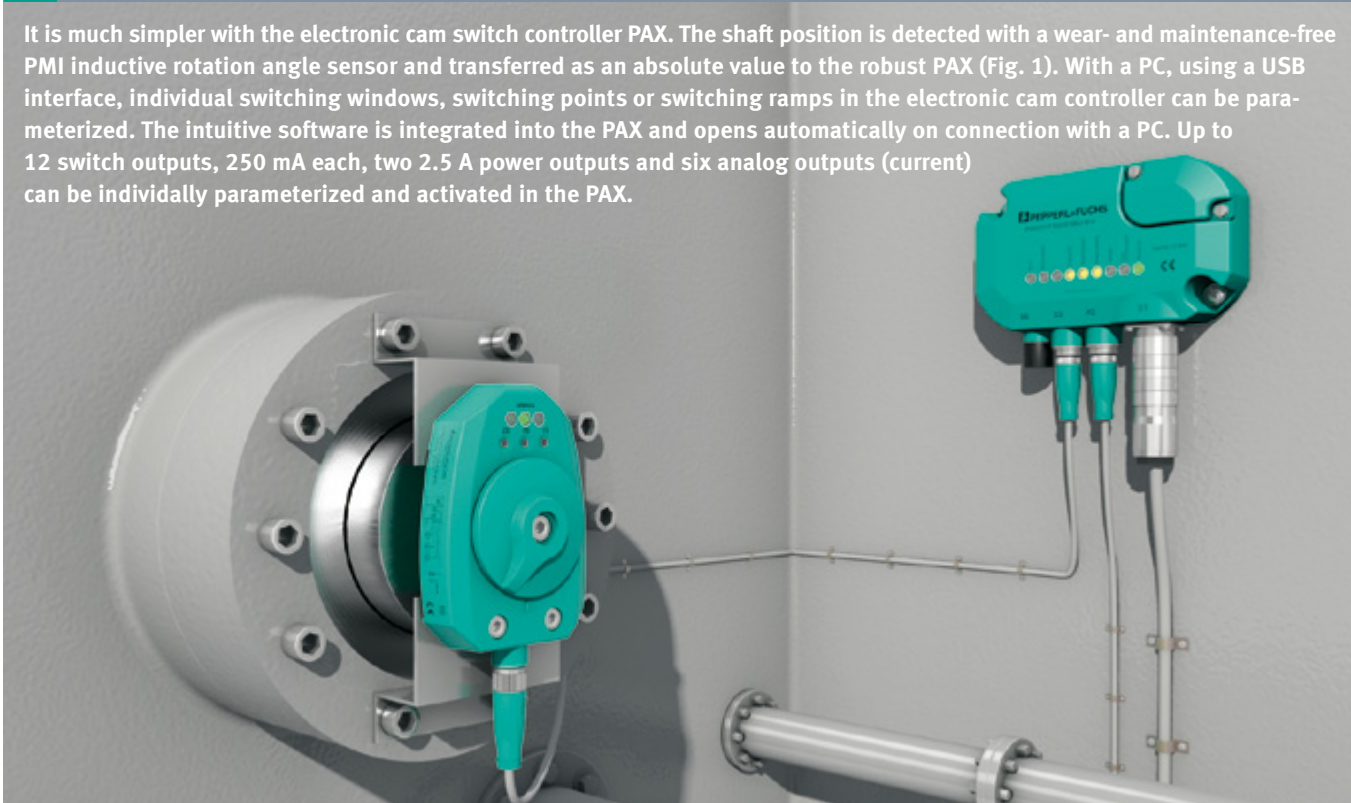
## CUMBERSOME MECHANICAL SOLUTION

Cam switch controllers are used wherever control is achieved as a function of machine position. With mechanical cam switch controllers, and particularly with rotational movements, mechanical cams are positioned on a shaft. These cams must be intricately positioned according to the required application switching characteristics in order to actuate the mechanical switches.



## SO MUCH SIMPLER: ELECTRONIC CAM SWITCH CONTROLLER PAX

It is much simpler with the electronic cam switch controller PAX. The shaft position is detected with a wear- and maintenance-free PMI inductive rotation angle sensor and transferred as an absolute value to the robust PAX (Fig. 1). With a PC, using a USB interface, individual switching windows, switching points or switching ramps in the electronic cam controller can be parameterized. The intuitive software is integrated into the PAX and opens automatically on connection with a PC. Up to 12 switch outputs, 250 mA each, two 2.5 A power outputs and six analog outputs (current) can be individually parameterized and activated in the PAX.



**Processes in real time**

**Can be positioned wherever you like outside the control cabinet**

**Generates a maximum of 16 switching points per output**

**Up to six analog outputs available**

**Power outputs**

**Wear-free, maintenance-free and with a long service life, as PMI360D sends the position to the PAX**

**Quick and easy installation cuts costs**

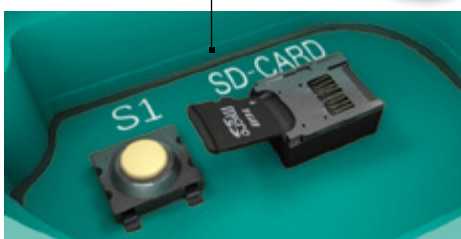
**Replaces mechanical cam switch controllers, multiple limit switches and geared limit switches**

**All data is stored on an integral micro SD card**

**PMI360D-F130 series-R2**

## MICRO SD CARD

- All data stored on integral micro SD card
- The micro SD card is easy to remove and insert
- Configuration software directly on the micro SD card



## TECHNICAL DATA

General data	
Model number	PAX001-F160-6I14E2-B14
Switching element function output	12 x DC, PNP, NO contacts (250 mA each) 2 x DC, PNP, NO contacts (2.5 A each) 6 x analog current (4 mA ... 20 mA)
Nominal ratings	
Supply voltage	15 V ... 30 V
Short circuit protection	pulsing
Operating current	0 mA ... 150 mA
Status indicators	9 LED displays
Ambient conditions	
Ambient temperature	-25 °C ... 70 °C (248 K ... 343 K)
Mechanical data	
Connection technology	X1, M23 connector X2, M12x1 connector X3, M12x1 connector X4, M12x1 connector
Housing material	PBT
Degree of protection	IP67

# FACTORY AUTOMATION – SENSING YOUR NEEDS



Pepperl+Fuchs sets the standard in quality and innovative technology for the world of automation. Our expertise, dedication, and heritage of innovation have driven us to develop the largest and most versatile line of industrial sensor technologies and interface components in the world. With our global presence, reliable service, and flexible production facilities, Pepperl+Fuchs delivers complete solutions for your automation requirements – wherever you need us.

## Contact

Pepperl+Fuchs GmbH  
Lilienthalstraße 200  
68307 Mannheim · Germany  
Tel. +49 621 776-4411 · Fax +49 621 776-27-4411  
E-mail: [fa-info@pepperl-fuchs.com](mailto:fa-info@pepperl-fuchs.com)

## Worldwide Headquarters

Pepperl+Fuchs GmbH · Mannheim · Germany  
E-mail: [fa-info@pepperl-fuchs.com](mailto:fa-info@pepperl-fuchs.com)

## USA Headquarters

Pepperl+Fuchs Inc. · Twinsburg, OH · USA  
E-mail: [fa-info@us.pepperl-fuchs.com](mailto:fa-info@us.pepperl-fuchs.com)

## Asia Pacific Headquarters

Pepperl+Fuchs Pte Ltd · Singapore  
Company Registration No. 199003130E  
E-mail: [fa-info@sg.pepperl-fuchs.com](mailto:fa-info@sg.pepperl-fuchs.com)

[www.pepperl-fuchs.com](http://www.pepperl-fuchs.com)

 **PEPPERL+FUCHS**  
SENSING YOUR NEEDS